

VITRIFIED  
STEP & RISER TILES

MESTRO<sup>®</sup>  
STEP & RISER



THE  
SIZE OF  
**STYLE &  
CREATIVITY**



# STEP & RISER

Ready to Install  
**Vitrified Step & Riser**

## Features & Benefits

### Concepts for Designing

Step & Riser by Mestro are available in Different designs and colors. As High Quality Tiles, They meet the technical Requirements of Different standards for the Production of stairs. The comprehensive concepts comprising basic, Decor and functional tiles can be used for a durable.

### Long Lasting & Easy Maintenance

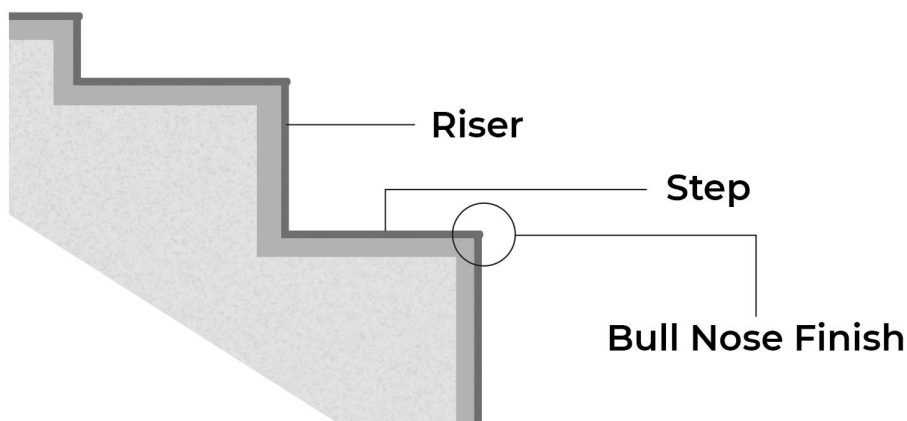
Step & Riser are full-body vitrified tiles, which means they absorb very low water and are impervious to weather or wear and tear induced damage. Fit them and forget them for years of trouble free performance.

### Safety for Senior Citizens, Physical Disables & Children

Safety is always the number-one priority. It is safe enough for senior citizens, physical disables and children. In addition to slip resistance in compliance with the applicable standards, Step Riser Vitrified tiles offer particular durability and also easy-care properties.

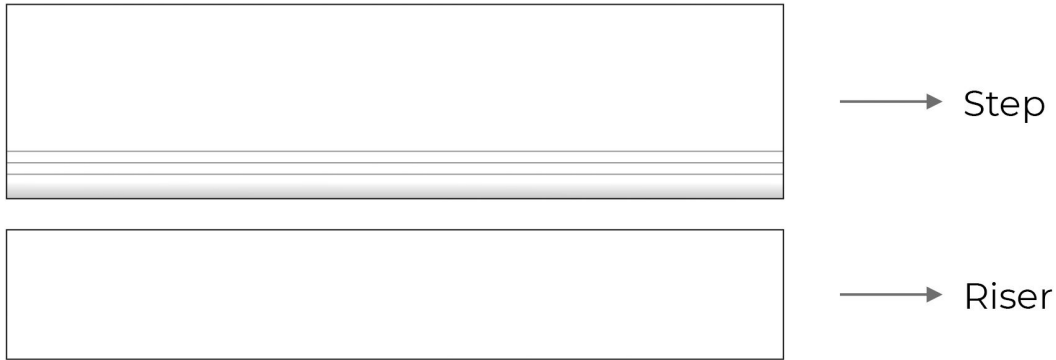
### Easy Installation

No more handling issues. No more labour intensive one-site installations, no more wastage costs. Mestro Step & Riser can be easily and speedily installed on site. Chipped and worn out staircases, constant need for polishing & repairs, are all things of the past.



Prefabricated stairs with bearing surface insulated to reduce impact sound

**Bull Nose  
Protrusion**



**Mestro** Step & Riser Tiles are available in

**3 Feet**

**Step** 900x300mm

**Riser** 900x200mm

**3.25 Feet**

**Step** 1000x300mm

**Riser** 1000x200mm

**4 Feet**

**Step** 1200x300mm

**Riser** 1200x200mm

<b>Granite</b>	<b>Step Stone</b>
<ul style="list-style-type: none"> <li>• Variation in Shade, Color, Density</li> <li>• Has to cut in sizes</li> <li>• Bull nosing, Half nosing will need to done</li> <li>• Longer Installation time</li> <li>• High cost</li> <li>• Affected by Weather hot/cold</li> <li>• High Maintenance</li> </ul>	<ul style="list-style-type: none"> <li>• Unpack Box, No Color, Density variation</li> <li>• Ready to Lay Tiles</li> <li>• Ready Bull nose</li> <li>• Easy to Install</li> <li>• Lower cost than granite</li> <li>• Impervious to weather</li> <li>• Easy to maintain</li> </ul>



# 4 Feet PIXEL



**Step:**

1200x300mm

**Riser:**

1200x200mm

*Active*  
beauty





# 4 Feet PIXEL

**Step:** 1200x300mm  
**Riser:** 1200x200mm

**MESTRO**<sup>®</sup>  
STEP & RISER

**MC- 901**

Matt Finish



Step



Riser

**MC- 902**

Matt Finish



Step



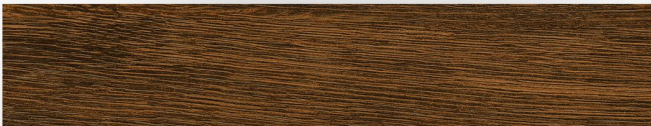
Riser

**MC- 903**

Matt Finish



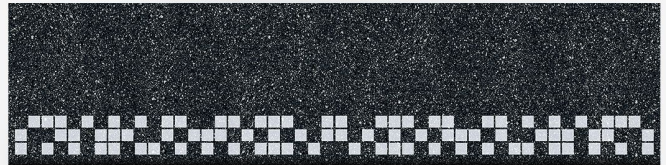
Step



Riser

**MC- 904**

Matt Finish



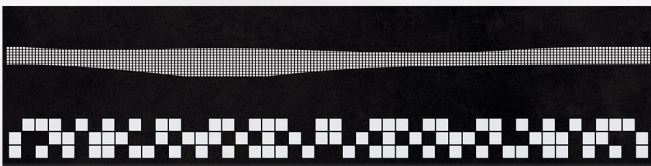
Step



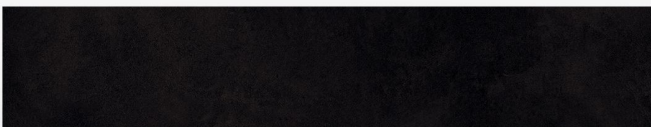
Riser

**MC- 905**

Matt Finish



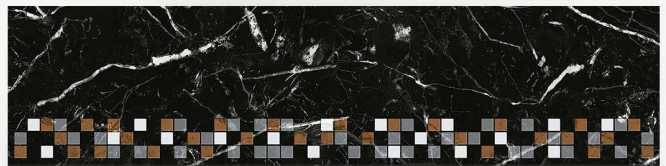
Step



Riser

**MC- 908**

Matt Finish



Step



Riser

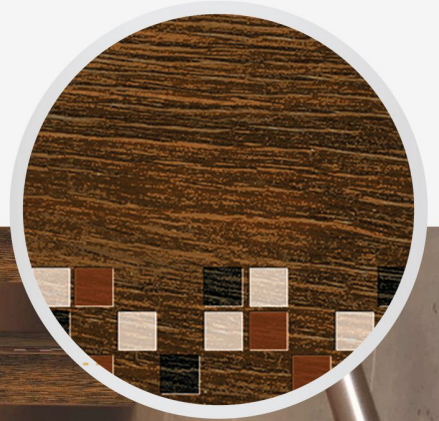


4 Feet  
PIXEL

Step: 1200x300mm  
Riser: 1200x200mm

**MESTRO**<sup>®</sup>  
STEP & RISER

REFRESH YOUR  
**HOME STYLE**



Real View





# 4 Feet PIXEL

**Step:** 1200x300mm  
**Riser:** 1200x200mm

**MESTRO**<sup>®</sup>  
STEP & RISER

**MC- 911**

Matt Finish



Step



Riser

**MC- 917**

Matt Finish



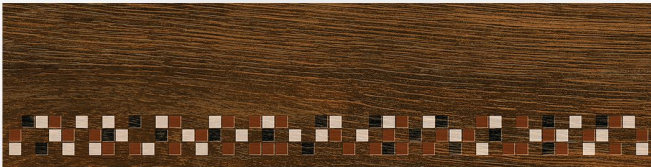
Step



Riser

**MC- 913**

Matt Finish



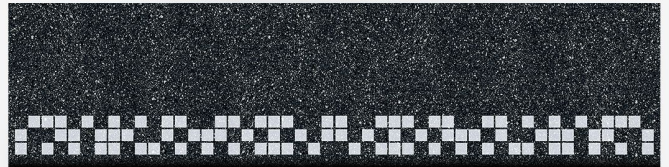
Step



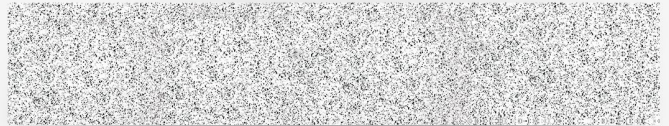
Riser

**MC- 914**

Matt Finish



Step



Riser

**MC- 918**

Matt Finish



Step



Riser

**MC- 919**

Matt Finish



Step



Riser

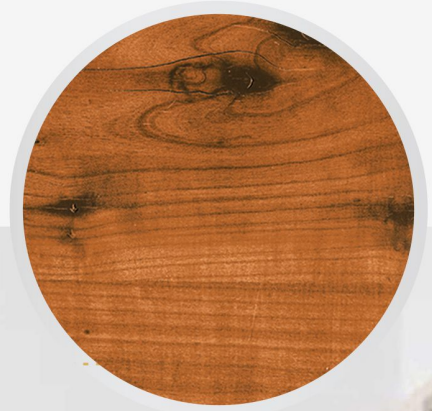


**4 Feet  
PIXEL**

**Step:** 1200x300mm  
**Riser:** 1200x200mm

**MESTRO**<sup>®</sup>  
STEP & RISER

# REFRESH YOUR HOME STYLE



**Real View**





# 4 Feet PIXEL

**Step:** 1200x300mm  
**Riser:** 1200x200mm

**MESTRO**<sup>®</sup>  
STEP & RISER

**MC- 920**

Matt Finish



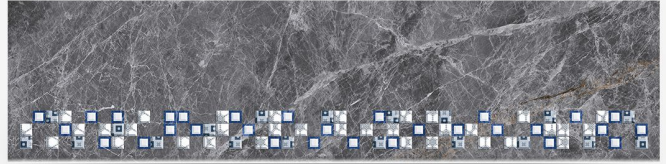
Step



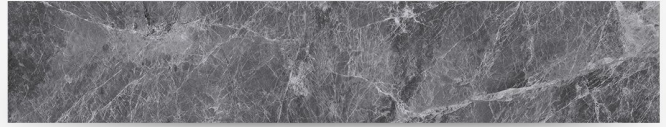
Riser

**MC- 921**

Matt Finish



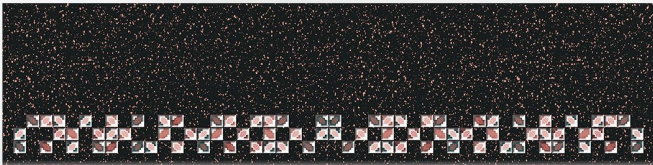
Step



Riser

**MC- 924**

Matt Finish



Step



Riser

**MC- 925**

Matt Finish



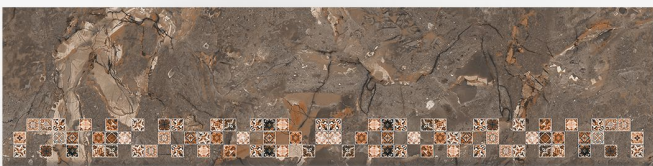
Step



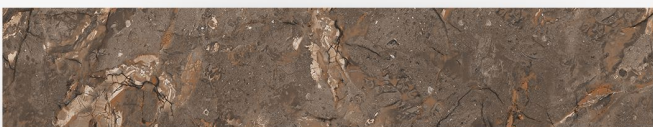
Riser

**MC- 926**

Matt Finish



Step



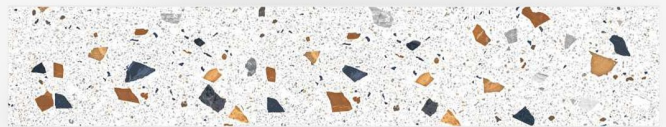
Riser

**MC- 928**

Matt Finish



Step



Riser



**4 Feet  
PIXEL**

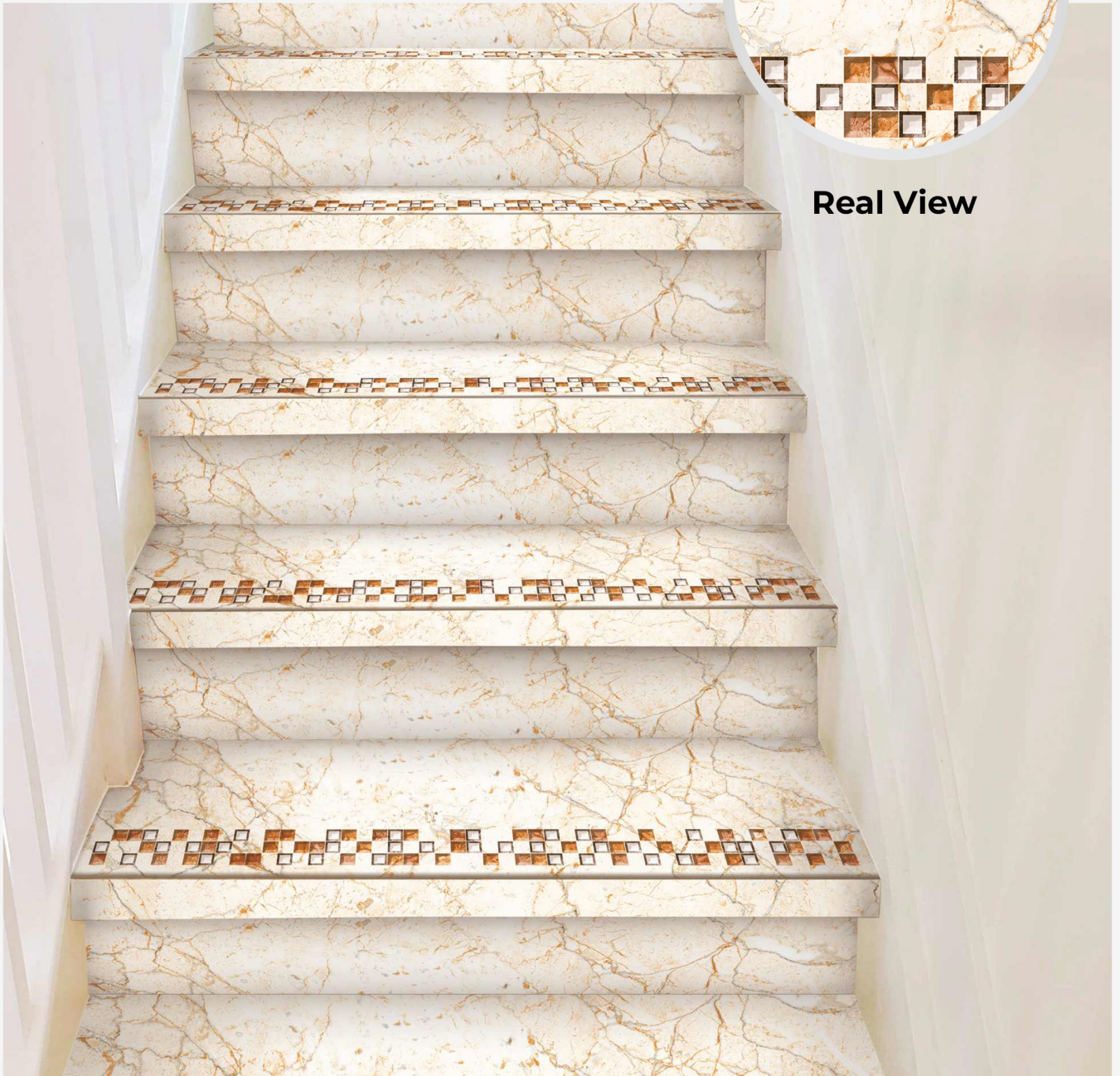
**Step:** 1200x300mm  
**Riser:** 1200x200mm

**MESTRO**<sup>®</sup>  
STEP & RISER

YOUR DREAM  
**OUR CREATION**



**Real View**





# MESTRO<sup>®</sup>

STEP & RISER

## Mestro Ceramics

### Corporate Office

8A National Highway, Lakhdirpur Road,  
Morbi-2 (Guj.)India 363642

+91 99254 68000 | +91 97732 46460

### Regional Office

Ramesh Subramanian, 15, D.P.T. Rajan Salai,  
K.K. Nugar, Chennai - 600078

+91 97909 00029

mestroc ceramics@gmail.com | [www.mestroc ceramics.com](http://www.mestroc ceramics.com)



Contact us